

## Wafer Double Door Check Valve

**FIG. 5304**

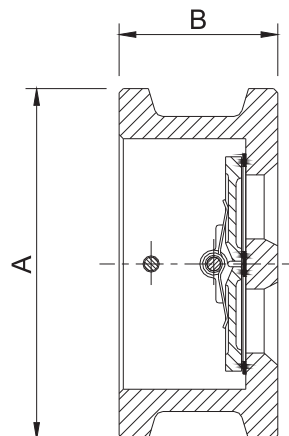
### Specifications

- The short face to face dimension and compact design of this valve allow installation and service in tight spaces.
- Spring assisted for better dynamic behavior.
- Soft sealed for perfect tightness even at low differential pressure.
- Flanged to EN1092-2 PN10 or PN16, ANSI B16.1 Class125.  
(Other types available on request )
- Rated Working Pressure 40 bar, 300 psi.

### Material Specification

Part	Material	ASTM Specification
Body	Stainless Steel	A351 Grade CF8/CF8M
Disc	Stainless Steel	A351 Grade CF8/CF8M
Seat	Viton	Commercial
Hinge Pin	Stainless Steel	A276 Type 316
Stop Pin	Stainless Steel	A276 Type 316
Pin Retainer	Stainless Steel	A276 Type 316
Spring	Stainless Steel	A276 Type 302
Washer	PTFE	Commercial
Gasket	Viton	Commercial

### Schematic



### Main Dimensions (mm)

Size	A			B
	Table D / E Flange	ANSI 125# / 150# Flange	EN1092-2 PN16 Flange	
DN50	106	106	106	54
DN65	126	125	126	54
DN80	141	144	141	57
DN100	165	176	165	64
DN125	190	211	190	70
DN150	220	246	220	76
DN200	287	303	280	95
DN250	349	356	337	108
DN300	414	417	397	143
DN350	471	480	454	184

#### Notes

- Designs, materials and specifications shown are subject to change without notice due to the continuous development of our products.