

## Ball Check Valve Flanged Ends & Threaded Ends

**FIG. 5109**  
**FIG. 5709**

### Specifications

- Face to face dimensions to EN558-1 basic series 48 & DIN3202 F6 series.
- Fully rubber coated ball.
- Functions even at a low pressure.
- Free low passage, blockage-free.
- Low frictional losses.
- For sewage prone to blockages.
- Flanged and drilling complies with EN1092-2 PN10/16; ANSI B 16.1 Class125.
- With NPT or BSPT Thread Ends.
- Rated Working Pressure 16 bar, 250 psi.

### Corrosion Protection

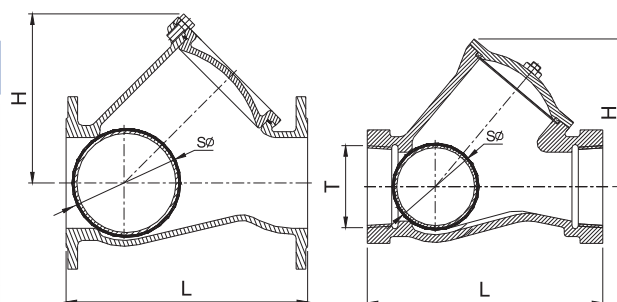
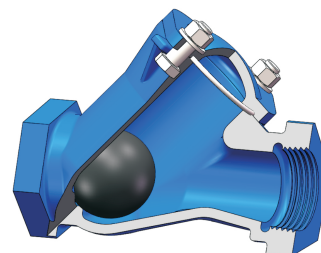
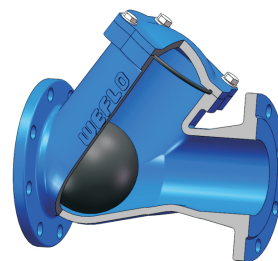
- Fusion Bonded Coating Interior and Exterior.

### Material Specification

Part	Material	EN Specification	ASTM Specification
Body	Ductile Iron	EN 1563 EN-GJS-450-10	A536 Grade 65-45-12
Cover	Ductile Iron	EN 1563 EN-GJS-450-10	A536 Grade 65-45-12
Ball	EPDM/NBR Encapsulated DN25-200:Aluminum, DN250-500:Ductile Iron		
Gasket	Rubber	EN 681 EPDM/NBR	D2000 EPDM/NBR

- Other material types are available upon request.

### Schematic



**FIG.5109**

**FIG.5709**

### FIG. 5109 Main Dimensions (mm)

Size	DN40	DN50	DN65	DN80	DN100	DN125	DN150	DN200	DN250	DN300	DN350	DN400	DN500
L	180	200	240	260	300	350	400	500	600	700	800	900	1100
H	100	125	140	195	220	225	288	355	420	480	580	735	884
S φ	50	63	80	96	125	150	180	250	320	370	414	490	600

### FIG. 5709 Main Dimensions (mm)

Size	DN25	DN32	DN40	DN50	DN65	DN80	DN100
T	1"NPT/BSPT	1-1/4"NPT/BSPT	1-1/2"NPT/BSPT	2"NPT/BSPT	2-1/2"NPT/BSPT	3"NPT/BSPT	4"NPT/BSPT
L	107	140	180	200	240	260	300
H	60	75	95	125	140	180	207
S φ	32	40	50	63	80	96	125

#### Notes

- Designs, materials and specifications shown are subject to change without notice due to the continuous development of our products.