

Shouldered Ends Center Line Butterfly Valve

FIG. 2952A

Specification

- Centerline type.
- Rubber Seat Liner Bonded on the Steel Body.
- Position Lock .
- Handle Operated.
- Shouldered End Dimensions comply with AWWA C606.
- Rated Working Pressure 16 bar /200 psi.

Corrosion Protection

- Fusion Bonded Coating or Liquid Painting Interior and Exterior.

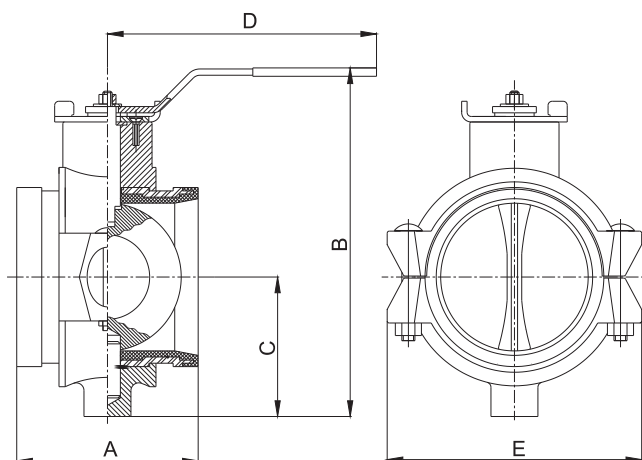
Material Specifications

Part	Material	ASTM Specification
Body	Ductile Iron	A536 Grade 65-45-12
Coupling	Carbon Steel	A120
Body Seat	Rubber	D2000
Shaft	Stainless Steel	A276 Type 420
Disc	Stainless Steel	A351 Grade CF8
Shaft Bushing	Brass	B124 Grade C37700
Shaft Sealing	O-Ring	D2000
Top Plate	Carbon Steel	A283M Grade D
Handle	Carbon Steel	A283M Grade D

Options

- WRAS Approved Fusion Bonded Coating or Liquid Painting and Rubber Seat.
- EPDM Bonded Body Seat.
- CF8M Disc.

Schematic



Main Dimensions (inch/mm)

Size	2"	2-1/2"	3"	4"	6"	8"
A	2.8/71	3.82/97	3.82/97	4.5/115	5.78/147	5.31/135
B	5.5/140	6.75/175	7.25/185	9/230	11.25/285	12.75/325
C	2/50	2.75/70	3/75	3.5/90	4.5/115	5.75/145
D	6.75/175	6.75/175	6.75/175	10.5/270	10.5/270	10.5/270
E	4/105	5/130	6/155	7/180	9.5/240	11.75/300

Notes

- Designs, materials and specifications shown are subject to change without notice due to the continuous development of our products.