

Lug Butterfly Valve

FIG. 2502-S

Specifications

- Meet or exceed the requirements of EN593 .
- Vulcanized liner.
- One-piece shaft extending completely through the disc.
- Mounting Flange in accordance with ISO 5211.
- Face to face dimensions comply with EN558-1, API 609, DIN3202, BS 5155 and ISO 5752 ,ASME B16.10.
- Suitable Connection Flange with EN1092 PN10/16 and ASME B16.1 -Class 125.
- Rated Working Pressure 16 bar/250 psi.
- Certificated to ANSI / NSF 61 & 372.

Material Specification

Part	Material	ASTM Specification
Body	Stainless Steel	A351 Grade CF8
O-ring	Rubber,NBR	D2000
Shaft	Stainless Steel	A276 Type 304
Bushing(2"-14")	Plastics	FRP
Bushing(16"-24")	Bronze	B148 C95200
Body Seat	Rubber,NBR	D2000
Disc	Stainless Steel	A351 Grade CF8
Lever	Assembly	
Gearbox	Assembly	
Bolt	Stainless Steel	F593 Grade 304
Nut	Stainless Steel	F594 Grade 304
Pin	Stainless Steel	A276 Type 304
Bottom Cover	Stainless Steel	A351 Grade CF8

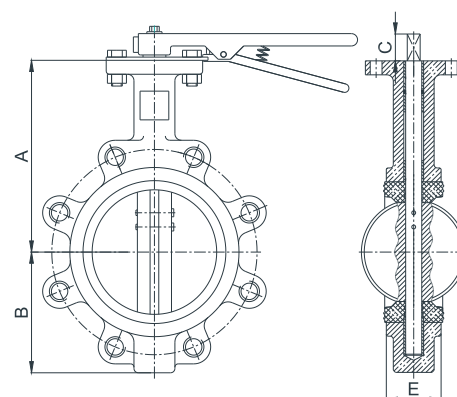
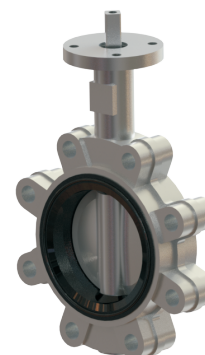
Options

- CF8M Stainless Steel Body.
- SS316 Stainless Steel Pin.
- CF8M Stainless Steel Disc.
- CF8M Stainless Steel Bottom Cover .
- EPDM rubber Body Seat.
- SS316 Stainless Steel Shaft.

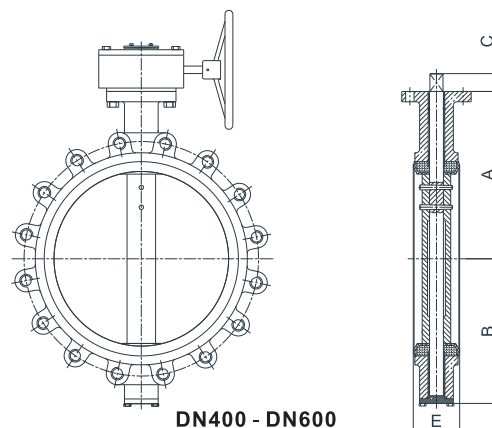
Main Dimensions (mm)

DN	50	65	80	100	125	150	200	250	300	350	400	450	500	600
A	140	150	158	176	190	212	236	265	305	368	400	422	455	565
B	80	89	95	114	127	139	174	203	242	267	300	340	365	445
E	43	46	46	52	56	56	60	68	78	78	102	114	127	154
C	14				17			22				36		

Schematic



DN50 - DN350



DN400 - DN600

Notes

- Designs, materials and specifications shown are subject to change without notice due to the continuous development of our products.