

Stainless Steel Corrugated Expansion/Flexible Joint

FIG. 8501

Product Specifications

The Stainless Steel Corrugated Expansion/Flexible Joint is composed of structural components such as one or several bellows, flange, joint pipe, is actually an equipment used to absorb distortion of the pipeline or other component caused by the thermal expansion and shrinkage or other reasons. It absorbs the axial, radial and angular displacement and also a vibration and noise isolating device. It can also be classified by structure as single axial type, single hinge type, single-type universal joints, double-free type, reset rod type, double hinge type, duplex-type universal joints, elbow pressure balanced, direct pressure balanced, and external pressure single axial type as well as their different combinations of various forms.



Technical Characteristics

Technical Data:

Overall Length: 200mm

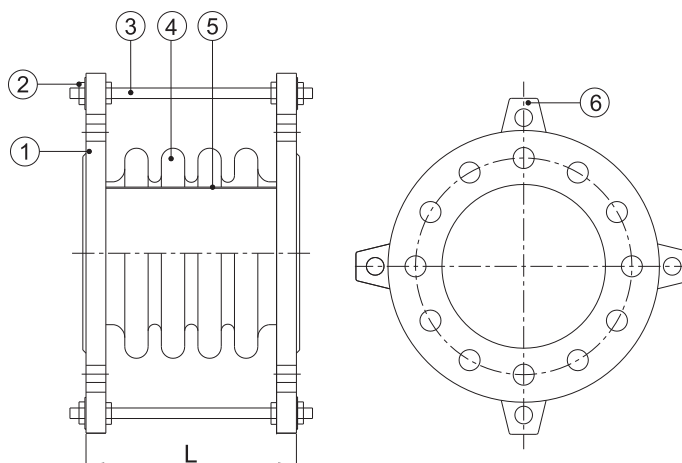
Operating Temperature: -20°C~200°C

Operating Pressure: 16 Bar、25 bar

Axial Movement: ± 20 mm

Material Specification

No.	Parts Name	Material
1	Flange	Carbon Steel
2	Nuts	Carbon Steel
3	Tie Rod	Carbon Steel
4	Bellow	SUS304
5	Inner Sleeve	SUS304
6	Holder	Carbon Steel



Axial Flange Pull Rod Type

Main Dimensions

Nominal Diameter	Length (mm)	Effective Area of Bellows (cm ²)	Axial Compensation (mm) / Rigidity (N/mm)	
			1.6MPa	2.5MPa
65	200	55	9/55	9/138
80	200	81	12/41	12/68
100	200	121	18/93	18/54
125	200	180	20/74	20/117
150	200	257	25/78	25/92
200	200	479	30/78	30/97
250	200	769	28/45	28/111
300	200	1105	35/65	35/55
350	200	1307	35/74	35/71
400	200	1611	35/68	35/81
450	200	1972	40/41	40/75
500	200	2445	50/75	50/45
600	200	3534	50/94	50/82

Notes

• Designs, materials and specifications shown are subject to change without notice due to the continuous development of our products.