



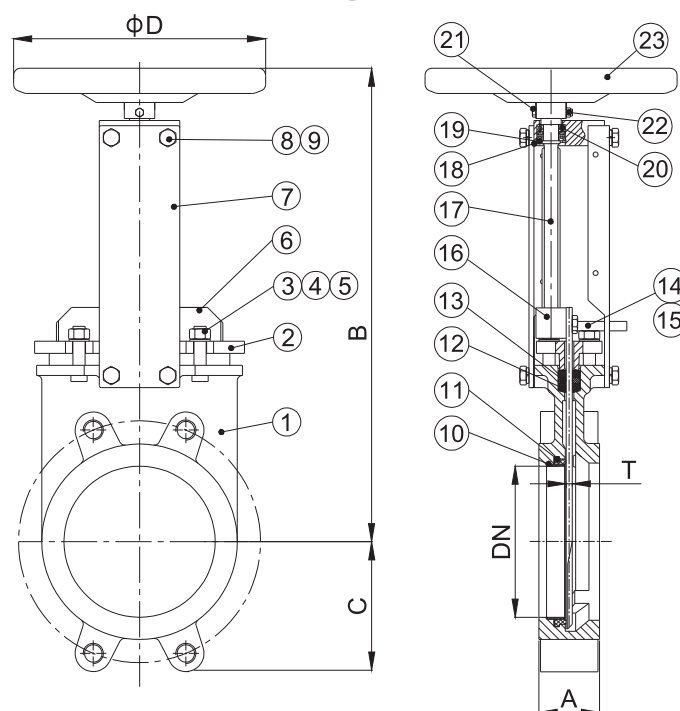
### WAFFER/LUG TYPE KNIFE GATE VALVE NON-RISING STEM WITH HANDWHEEL

#### FEATURES

- **Model 3328**-Wafer type
- **Model 3528**-Lug type
- Ductile Iron or Stainless Steel Body
- Uni-directional Wafer / Lug type
- Size Range: DN50 to DN450
- The cutting edge of the gate is inclined, which acts as a guide in the body and reduces the reaction force.
- NBR or EPDM Resilient Seat reduces the Operating Force necessary to close the valve.
- Full flow when fully opened, ensuring a high flow rate with low head loss.
- Connection Flanged Ends:  
EN1092-1/2, JIS B 2239/2220, AS 2129
- Maximum Working Temperature:  
NBR: 80°C; EPDM: 110°C
- Maximum Working Pressure:  
DN50-200: 10 bar  
DN250-300: 7 bar  
DN350-450: 4 bar

#### MATERIAL

No.	Parts	Material
1	Body	EN-GJS-450-10/ Stainless Steel
2	Packing Gland	EN-GJS-450-10/ Stainless Steel
3	Nut	Carbon Steel / Type 304ss
4	Washer	Carbon Steel / Type 304ss
5	Stud	Carbon Steel / Type 304ss
6	Gate	Stainless Steel, Type 304/316
7	Support Plate	Steel
8	Bolt	Carbon Steel / Type 304ss
9	Spring Washer	Carbon Steel / Type 304ss
10	Retainer	Stainless Steel, Type 304/316
11	Seat	NBR/EPDM
12	Packing	PTFE
13	O-ring	NBR
14	Position Indicator	Stainless Steel, Type 304/316
15	Nut	Stainless Steel, Type 304/316
16	Stem Nut	Bronze
17	Stem	Stainless Steel, Type 410
18	Connect Seat	Steel
19	Closing Ring	Spring Steel
20	Bearing	Steel
21	Bolt	Carbon Steel / Type 304ss
22	Nut	Carbon Steel / Type 304ss
23	Handwheel	Steel



#### DIMENSIONS (MM)

DN	A	B	C	D	T
50	40	289	65	200	5
65	40	313	70	200	5
80	50	335	95	200	5
100	50	380	103	200	5
125	50	415	114	250	6
150	60	470	129	250	6
200	60	580	157	300	8
250	70	670	197	300	8
300	80	768	217	300	10
350	96	900	252	400	10
400	100	1014	286	400	12
450	106	1127	310	400	12

• DN300 Stainless Steel Body size A=70mm

Designs, materials and specifications shown are subject to change without notice due to the continuous development of our products.