

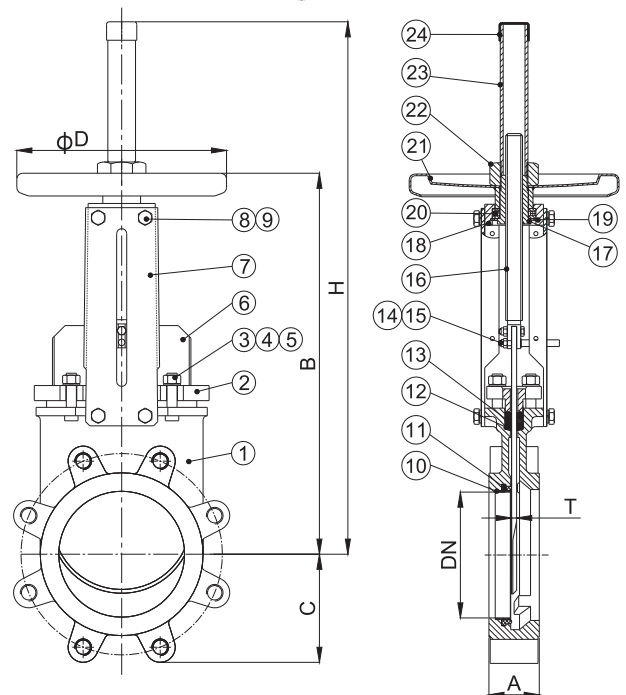
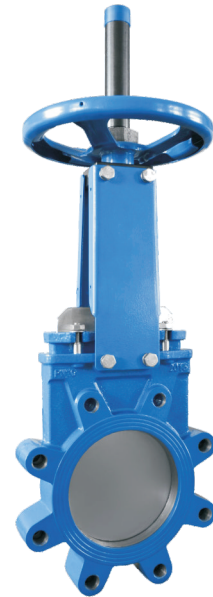
” LUG TYPE KNIFE GATE VALVE RISING STEM WITH HANDWHEEL

FEATURES

- **Model 3518**
- Ductile Iron Body
- Uni-directional Lug type
- Size Range: DN50 to DN350
- The cutting edge of the gate is inclined, which acts as a guide in the body and reduces the reaction force.
- NBR or EPDM Resilient Seat reduces the Operating Force necessary to close the valve.
- Full flow when fully opened, ensuring a high flow rate with low head loss.
- Connection Flanged Ends:
EN1092-1/2, JIS B 2239/2220, AS 2129
- Maximum Working Temperature:
NBR: 80°C; EPDM: 110°C
- Maximum Working Pressure:
DN50-200: 10 bar
DN250-350: 7 bar

MATERIAL

No.	Parts	Material
1	Body	EN-GJS-450-10
2	Packing Gland	EN-GJS-450-10
3	Nut	Carbon Steel / Type 304ss
4	Washer	Carbon Steel / Type 304ss
5	Stud	Carbon Steel / Type 304ss
6	Gate	Stainless Steel, Type 304/316
7	Support Plate	Steel
8	Bolt	Carbon Steel / Type 304ss
9	Spring Washer	Carbon Steel / Type 304ss
10	Retainer	Stainless Steel, Type 304/316
11	Seat	NBR/EPDM
12	Packing	PTFE
13	O-ring	NBR
14	Position Indicator	Stainless Steel, Type 304/316
15	Nut	Stainless Steel, Type 304/316
16	Stem	Stainless Steel, Type 410
17	Stem Nut	Bronze
18	Connect Seat	Steel
19	Closing Ring(DN125-450)	Spring Steel
20	Bearing (DN125-450)	Steel
21	Handwheel	Steel
22	Handwheel Nut	Steel
23	Hood	Steel
24	Hood Cover	Plastic



DIMENSIONS (MM)

DN	A	B	C	D	H	T
50	40	289	60	200	360	5
65	40	313	65	200	400	5
80	50	335	95	200	420	5
100	50	380	105	200	488	5
125	50	415	119	250	564	6
150	60	470	132	250	635	6
200	60	580	160	300	809	8
250	70	670	198	300	946	8
300	80	768	234	300	1118	10
350	96	900	254	400	1282	10

• DN300 Stainless Steel Body size A=70mm