

## Foot Valve

FIG. 1120

### Specifications

- Designed for silent operation, positive seating and full flow area.
- Suitable for pressure up to 16 bar water service.
- Coated EPDM or NBR Disc Sealed Ring.
- Screens are perforated 304 stainless steel with spot welded seam.
- Flanged and Drilling complies with EN1092-2 PN16/25, ANSI B 16.1 Class125 .
- Rated Working Pressure 16 bar/250 psi.

### Corrosion Protection

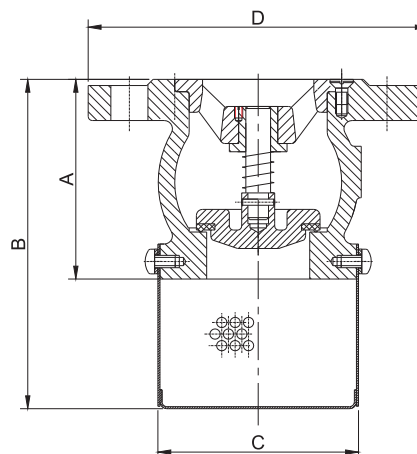
- Fusion Bonded Coating or Liquid Epoxy Painted Interior and Exterior.

### Schematic



### Material Specification

Part	Material	EN Specification	ASTM Specification
Body	Gray Cast Iron	EN 1561 EN-GJL-250	A126 Class B
Disc	Gray Cast Iron	EN 1561 EN-GJL-250	A126 Class B
Seat	CI Intergral	EN 1561 EN-GJL-250	A126 Class B
Disc Ring	Rubber	EN 681 EPDM/NBR	D2000 EPDM/NBR
Bushing	Brass	EN 12165 CuZn39Pb1	B124 C37700
Stem	Stainless Steel	EN 10088 X20Cr13	A276 Type 420
Spring	Stainless Steel	EN 10088 X5CrNi18-10	A276 Type 304
Support	Gray Cast Iron	EN 1561 EN-GJL-250	A126 Class B
Screen	Stainless Steel	EN 10088 X5CrNi18-10	A276 Type 304



### Main Dimensions (mm)

Size	DN50	DN65	DN80	DN100	DN125	DN150	DN200	DN250	DN300
A	100	120	140	170	200	230	288	354	410
B	160	205	240	300	355	410	490	575	655
C	94	120	142	177	206	237	290	330	360
D	165	185	200	220	250	285	340	405	460

### Notes

- Designs, materials and specifications shown are subject to change without notice due to the continuous development of our products.