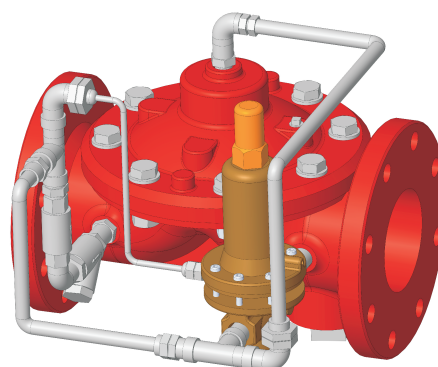


Pressure Relief Valve

FIG. 1321-300

Specifications

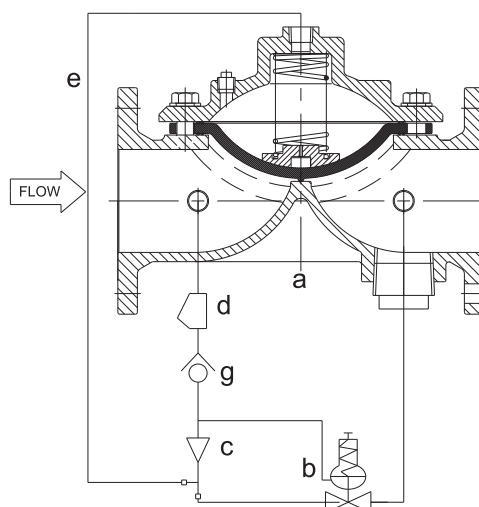
- Multiple End Types for Main Valve:
Flange by Flange, Flange by Groove, Groove by Groove.
- Pressure Relief Valve: Limits pipe line pressure by release excess pressure.
- Pressure sustaining: Prevents pipe line pressure from rising to a maximum value.
- Operates over a wide flow range.
- Inlet pressure adjustment range: 65~180psi.
- Can be maintained without removal from the pipe line.
- Flanged to EN1092-2 PN10/PN16, ANSI B16.1 Class125.
(Other available on request)
- Grooved ends to AWWA C606 Standard.
- Rated Working Pressure: 300 psi.
- Adjustment Range of Set Pressure: 65 to 180 psi.
- Fusion Bonded Epoxy Coated Interior and Exterior to AWWA C550 Standard.
- FM 1361 Approved.



Material Specifications

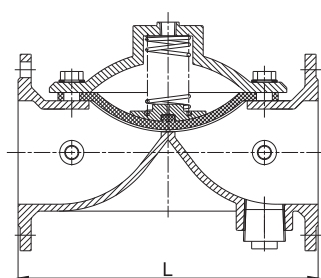
Part	Material	ASTM Specification
Body	Ductile Iron	A536 Grade 65-45-12
Bonnet	Ductile Iron	A536 Grade 65-45-12
Diaphragm	Nylon Reinforced Natural Rubber/EPDM/NBR	
Spring Retainer	Ductile Iron	A536 Grade 65-45-12
Spring	Stainless Steel	A276 Type 304
Bolt	Carbon Steel	A307 Grade B

NO.	Components	Material
a	Main Valve	
b	Pressure Relief Pilot	Assembly
c	Restriction Orifice	Stainless Steel 304
d	Y-Strainer	Stainless Steel 304
e	Pipeline	Stainless Steel 304
g	Check Valve	Stainless Steel 304

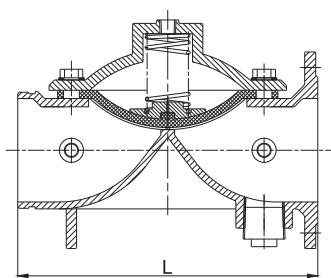


Main Dimensions (mm/inch)

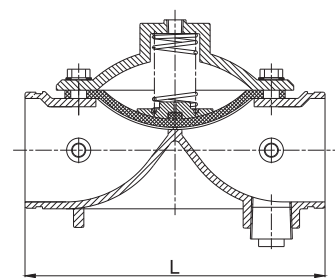
Size	2	2.5	3	4	5	6	8	10	12
L	233/9.2	290/11.5	310/12.2	356/14.0	370/14.5	436/17.2	530/20.8	636/25	835/32.8



FL x FL Ends



FL x GR Ends



GR x GR Ends

Notes

- Designs, materials and specifications shown are subject to change without notice due to the continuous development of our products.